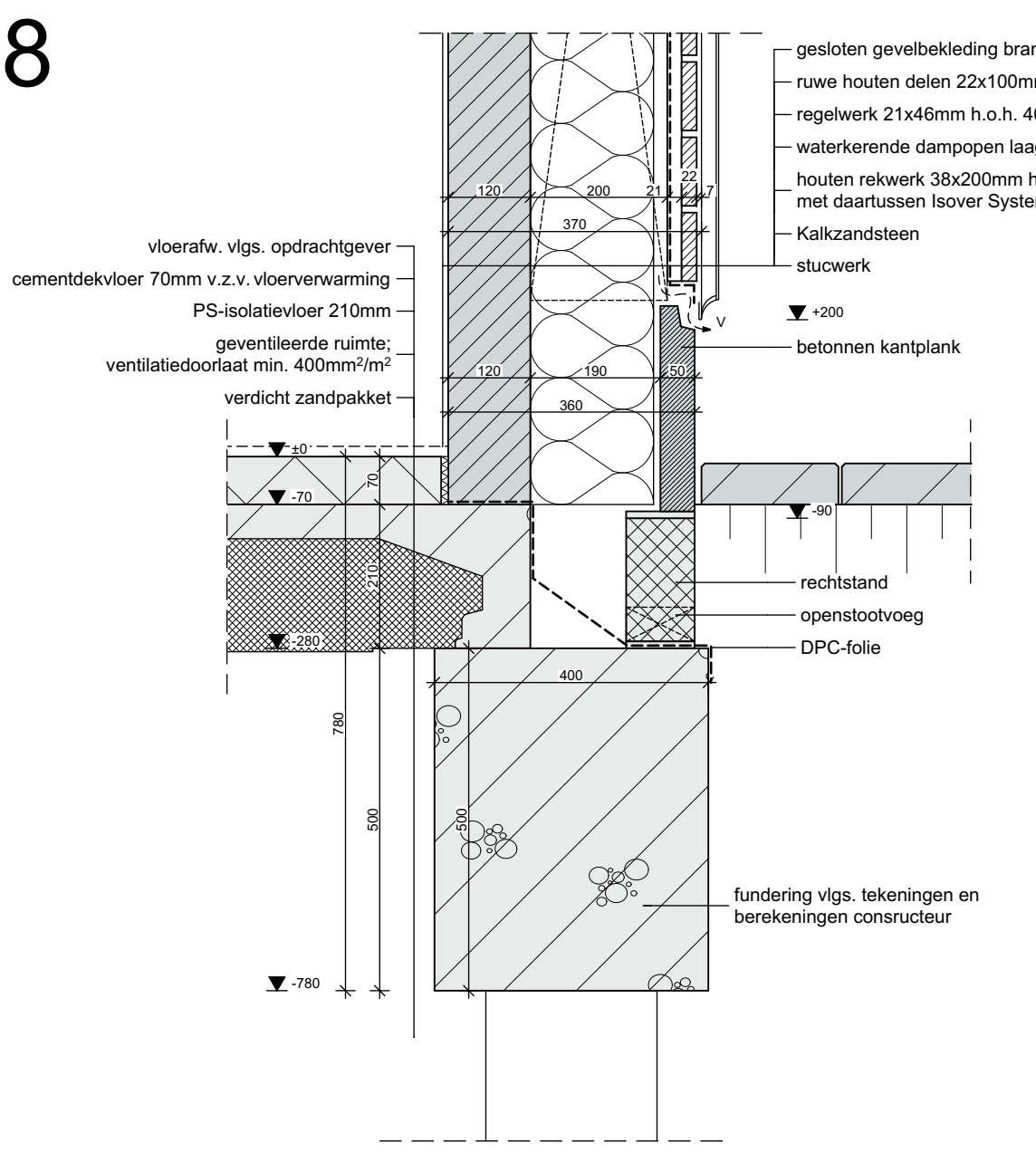
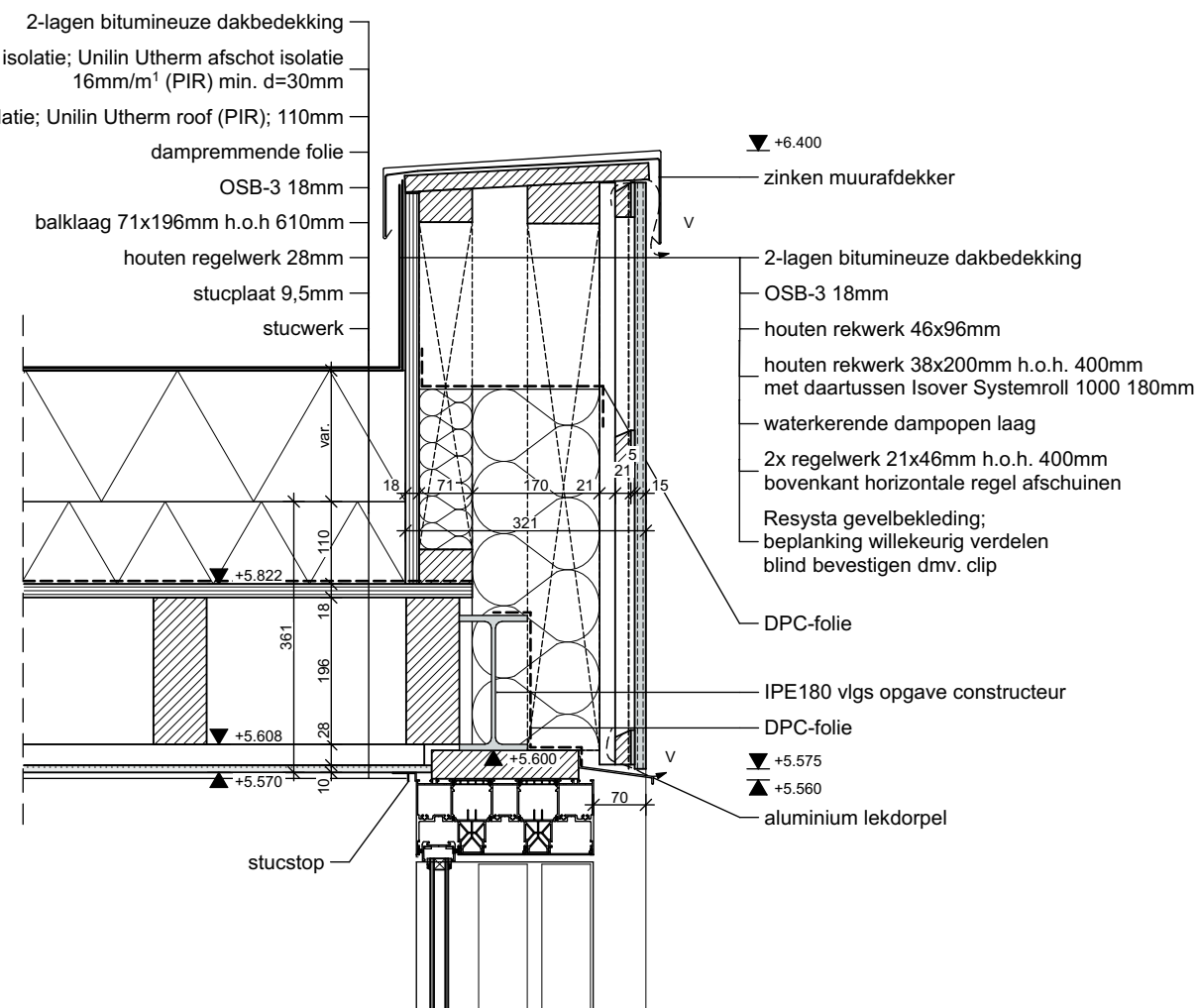


V-18



V-11



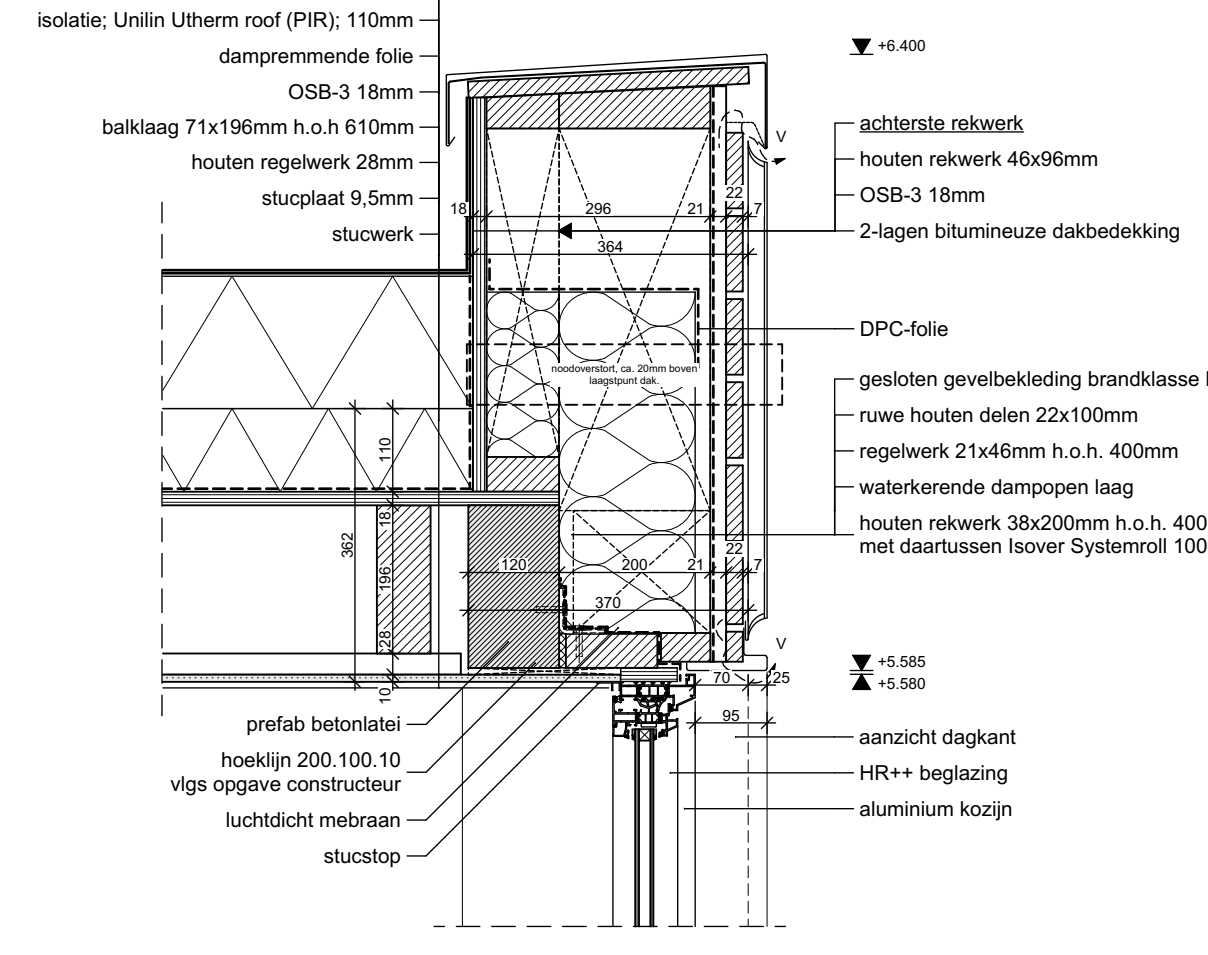
REKENINGEN

Koppennaam = (kop 100mm + stobvoeg 10mm) koppennaam 110mm
Lagenmaat = (steen 50mm + linoeug 12,55mm) lagenmaat 62,55mm
b.k. steen op peil aanzet geveldatwerk op 2 lagen onder peil

Rc-waarde thermische schil.

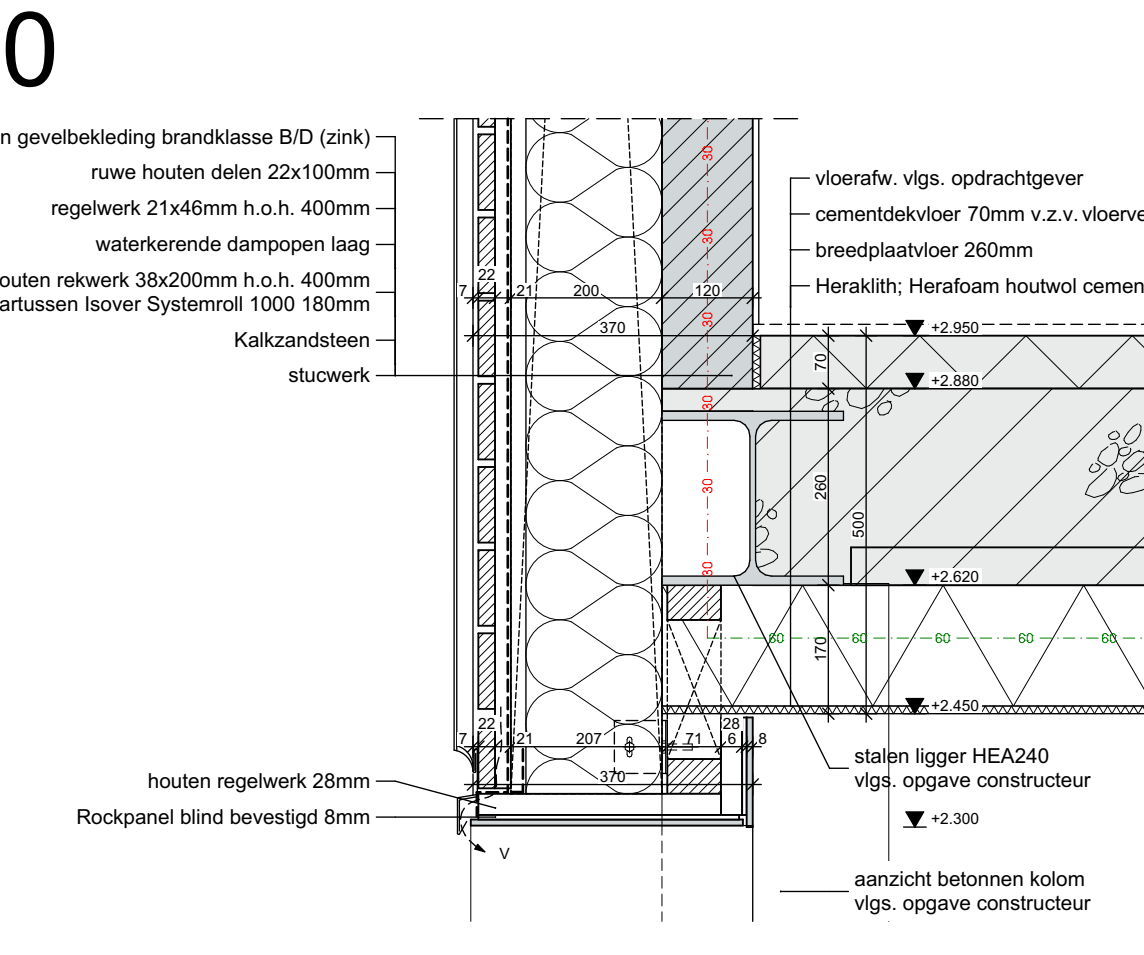
Vloer:
- PS-combinatievloer 210; 3,70 m²K/W
- verdelingsvloer; breedplaatvloer 260mm; 170mm Heraklith; 6,30 m²K/W
- Gevel: 4,70 m²K/W
- Gevelbekleding 350mm - 100mm kalkzandsteen; 4,70 m²K/W

2-lagen bitumineuze dakbedekking

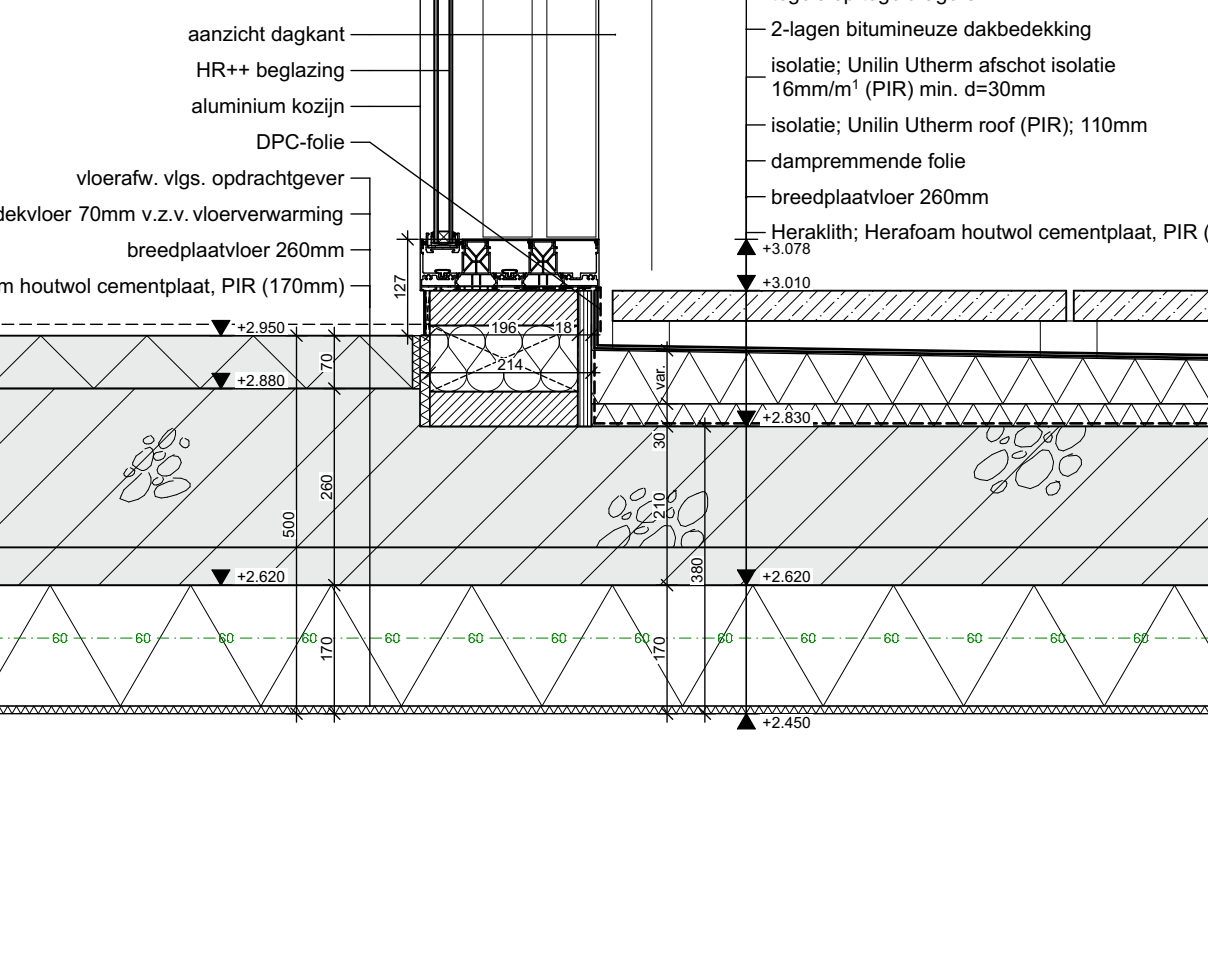


V-15

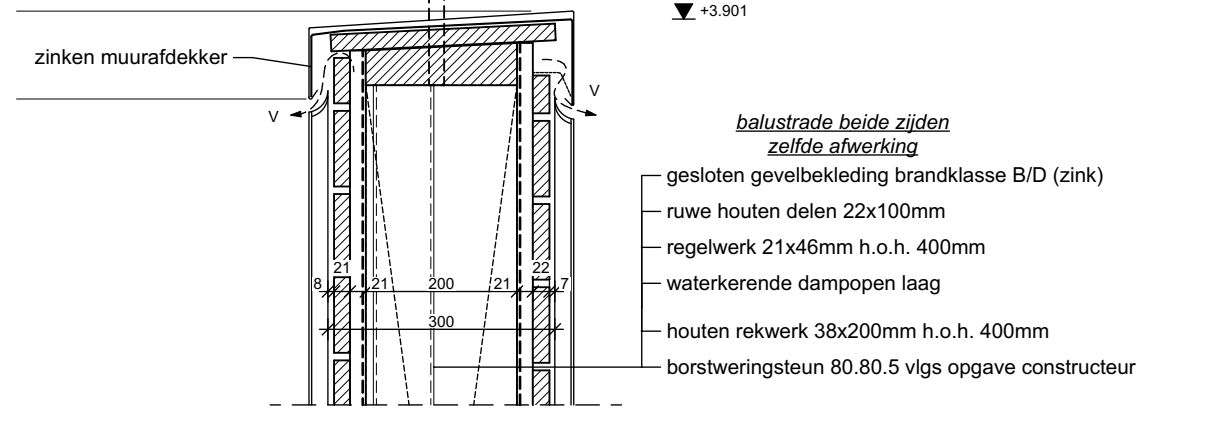
V-10



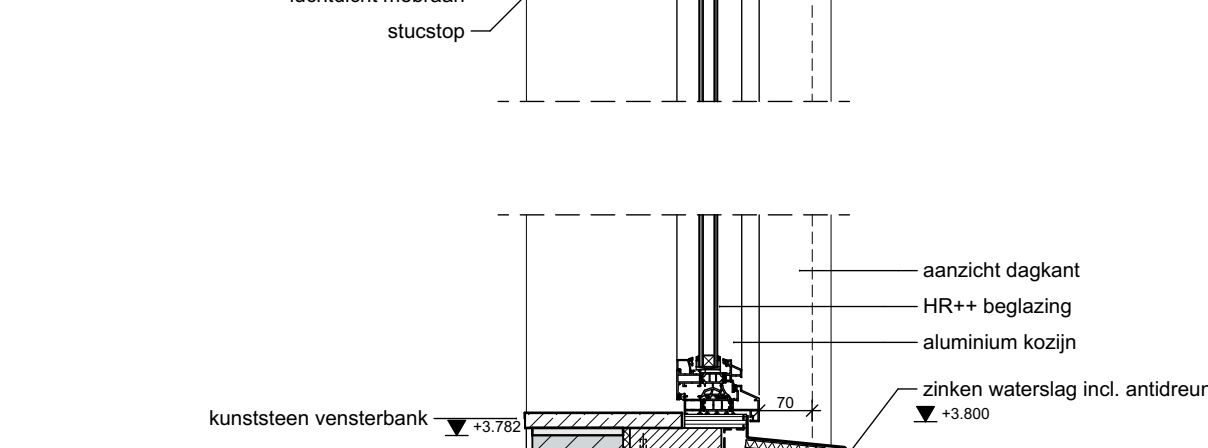
V-12



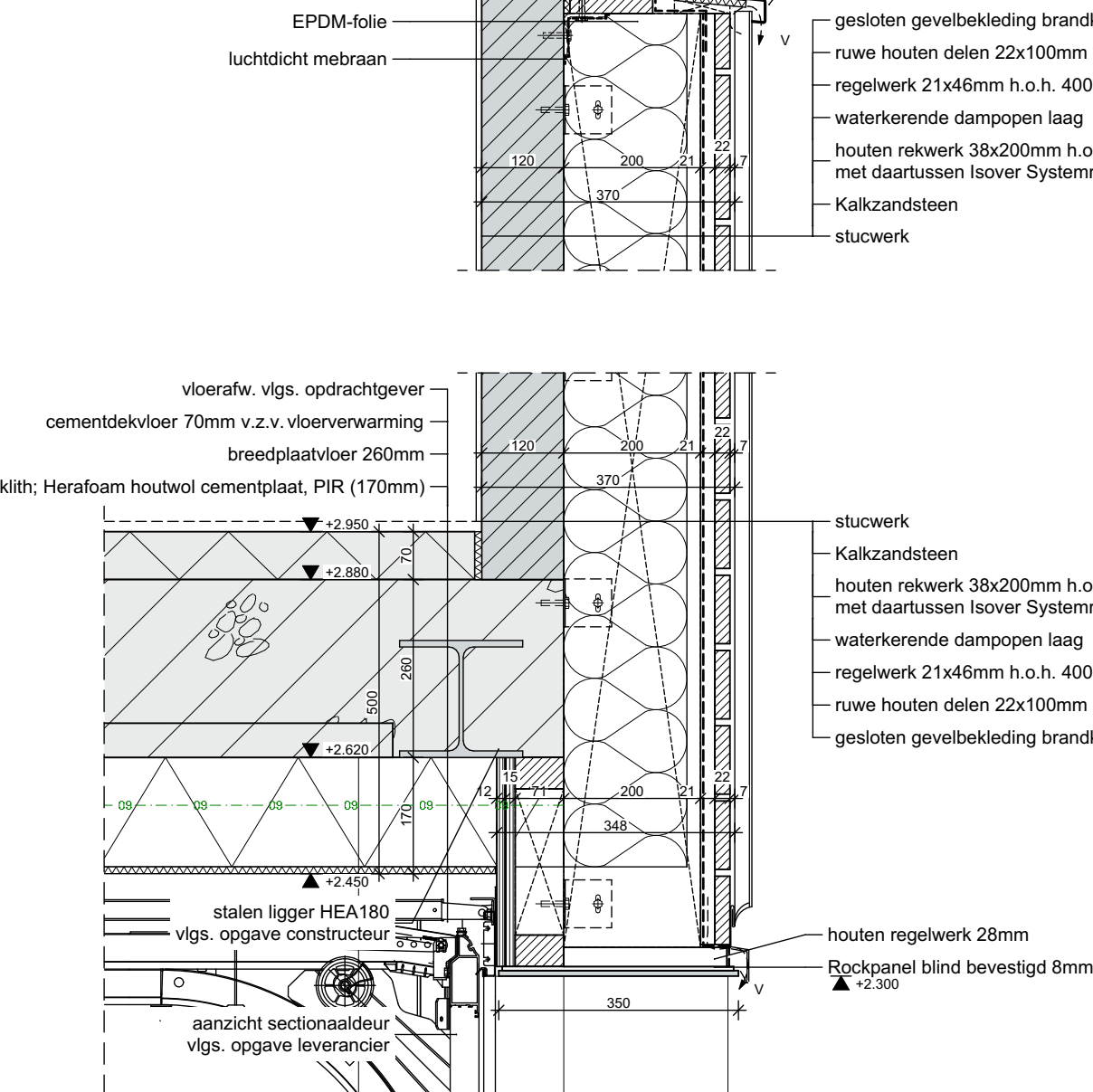
V-13



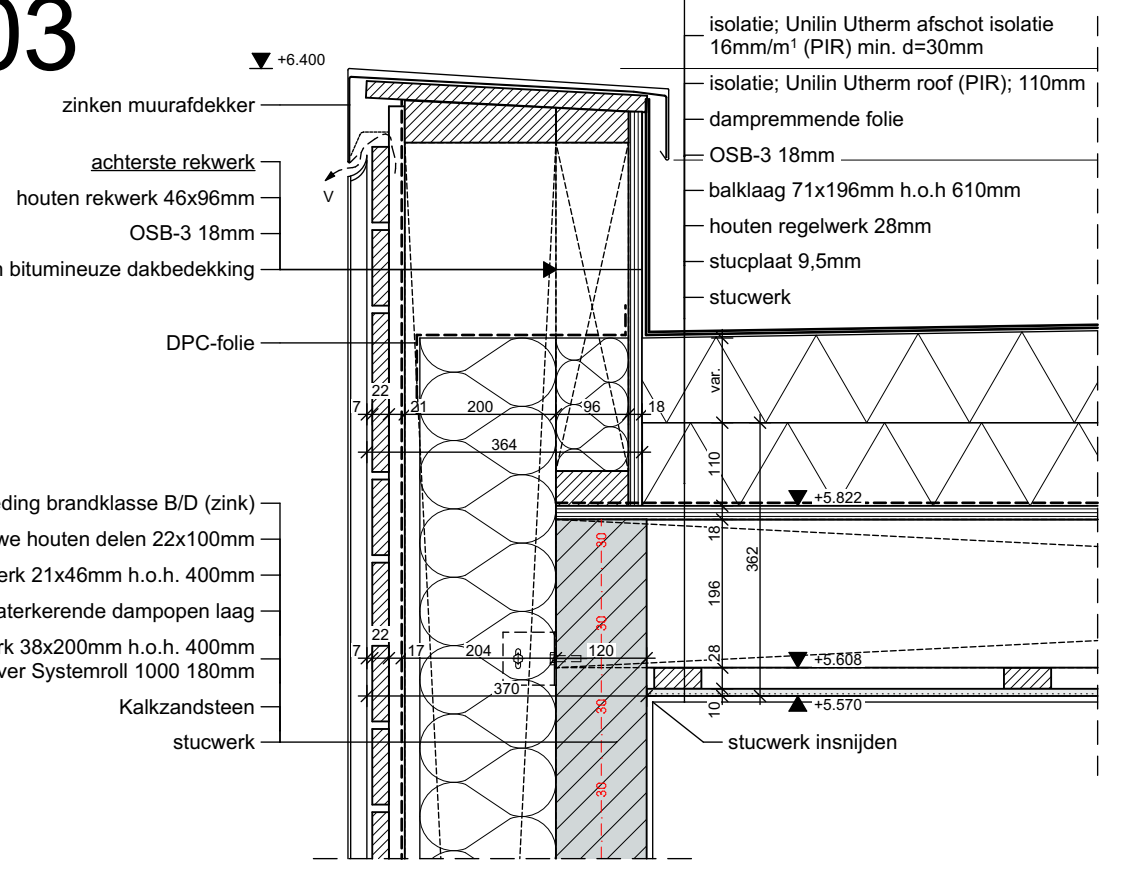
V-16



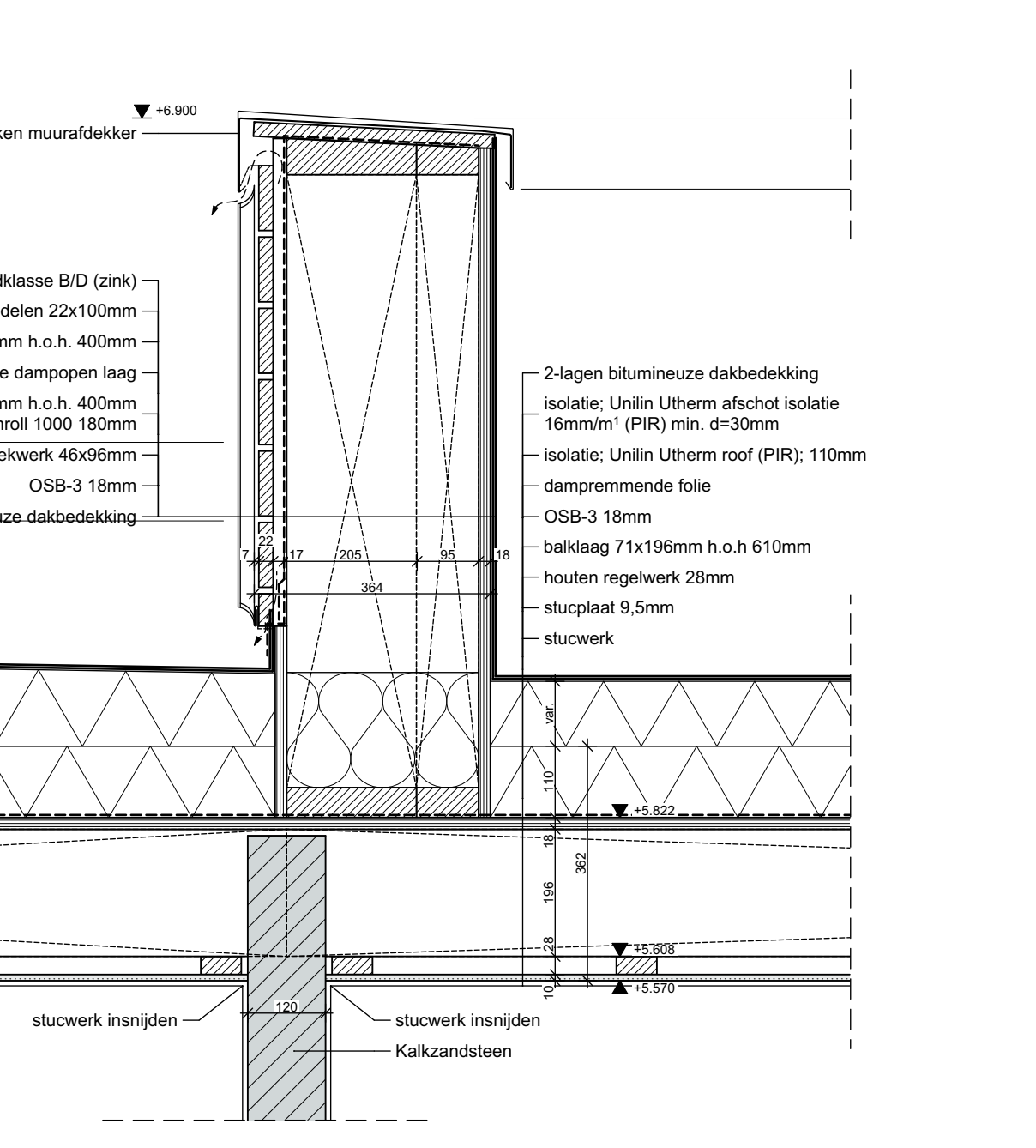
V-17



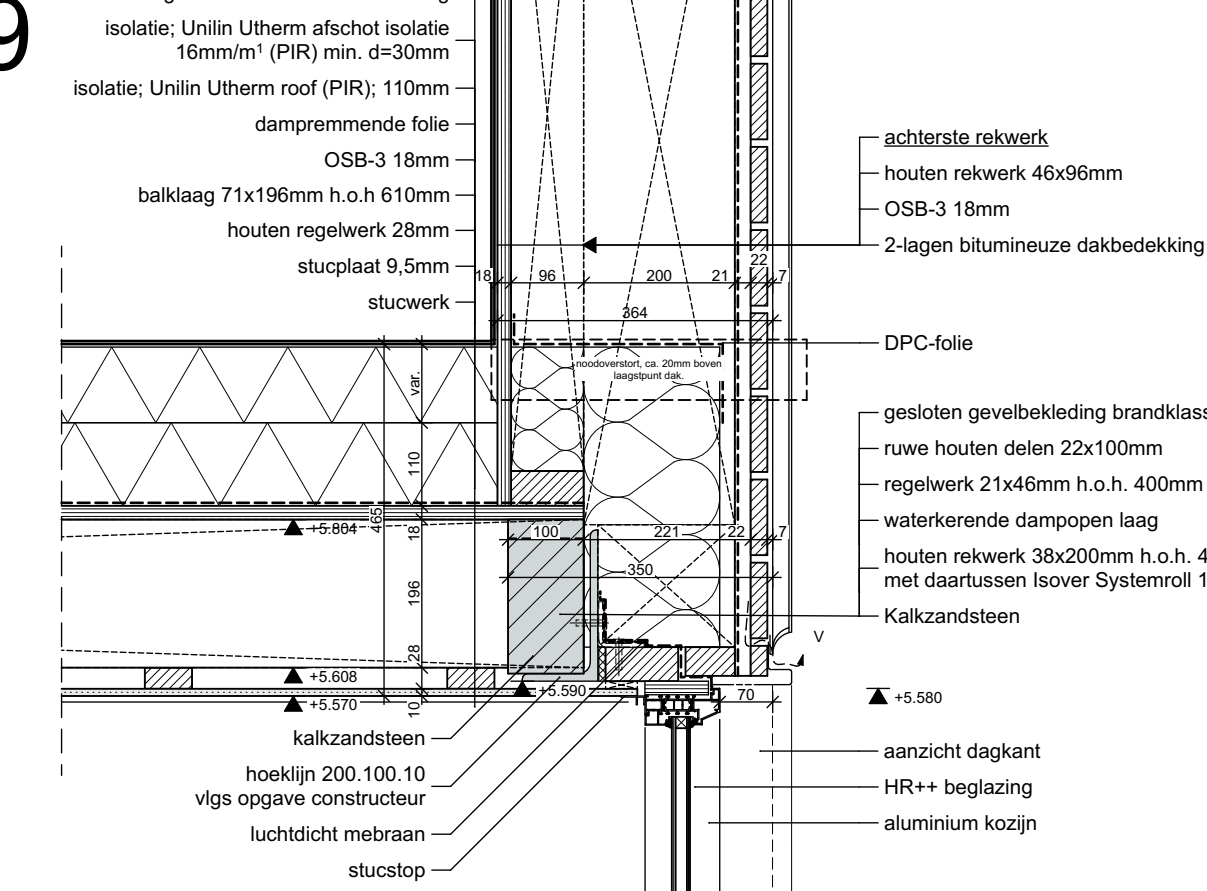
V-03



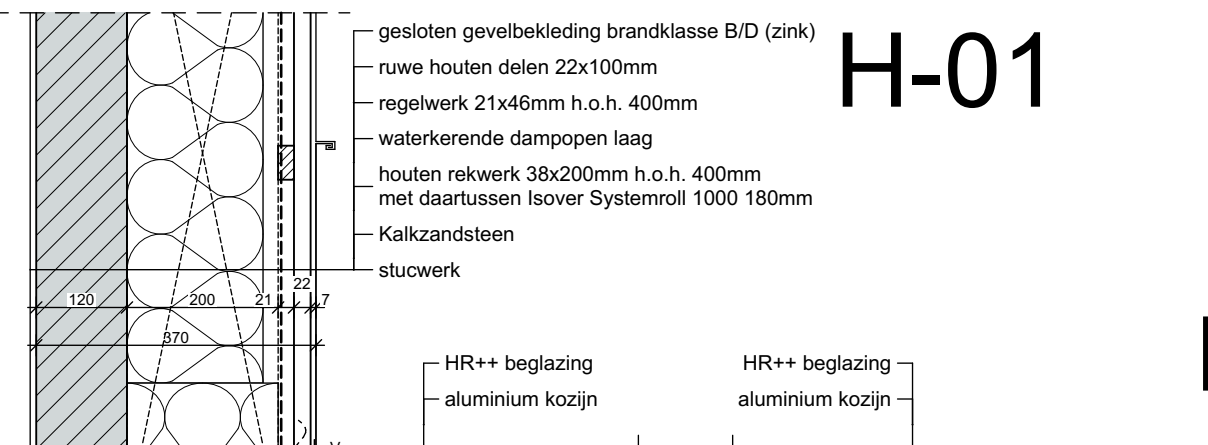
V-04



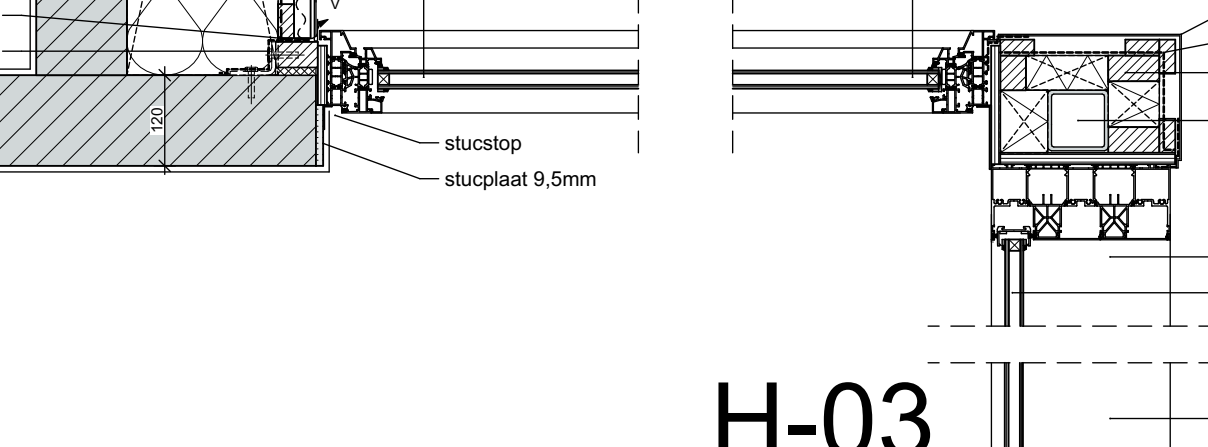
V-09



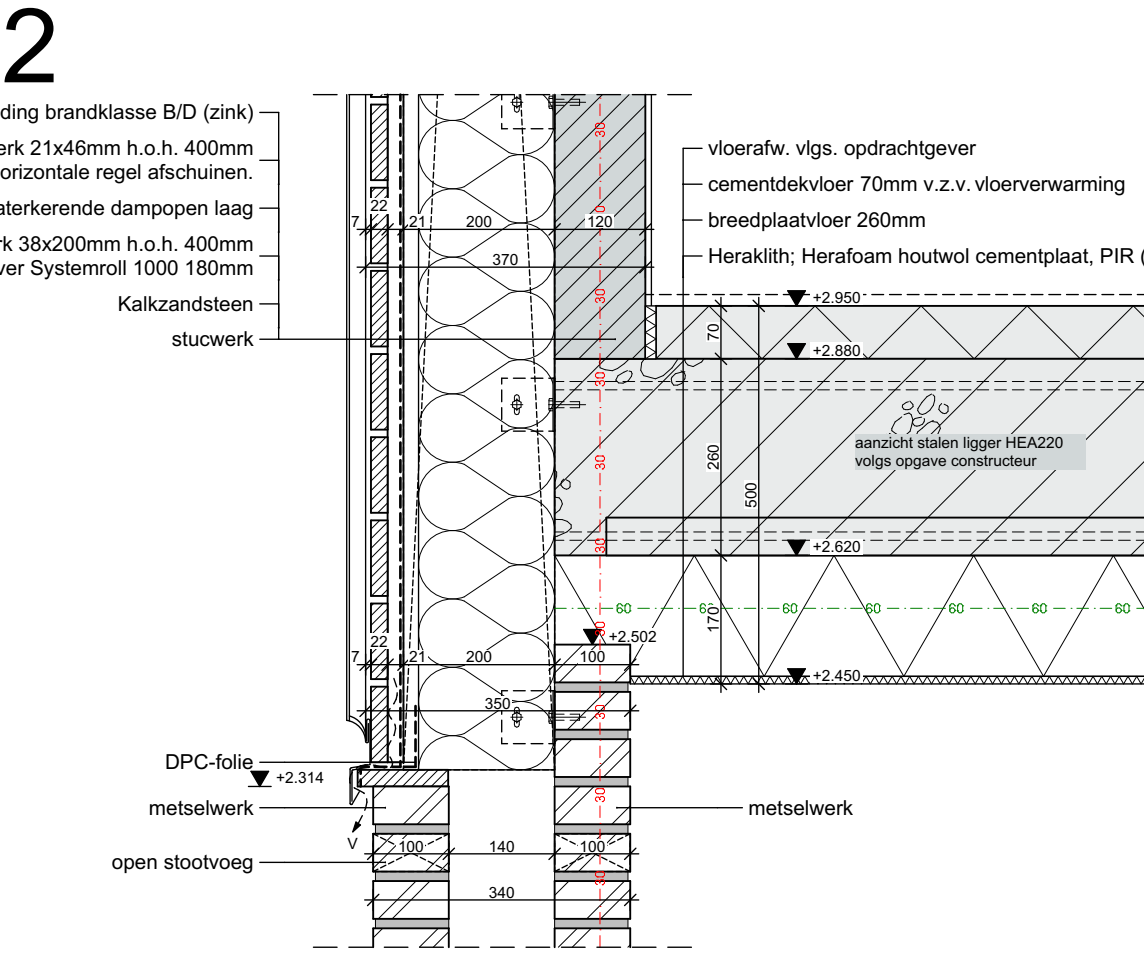
H-01



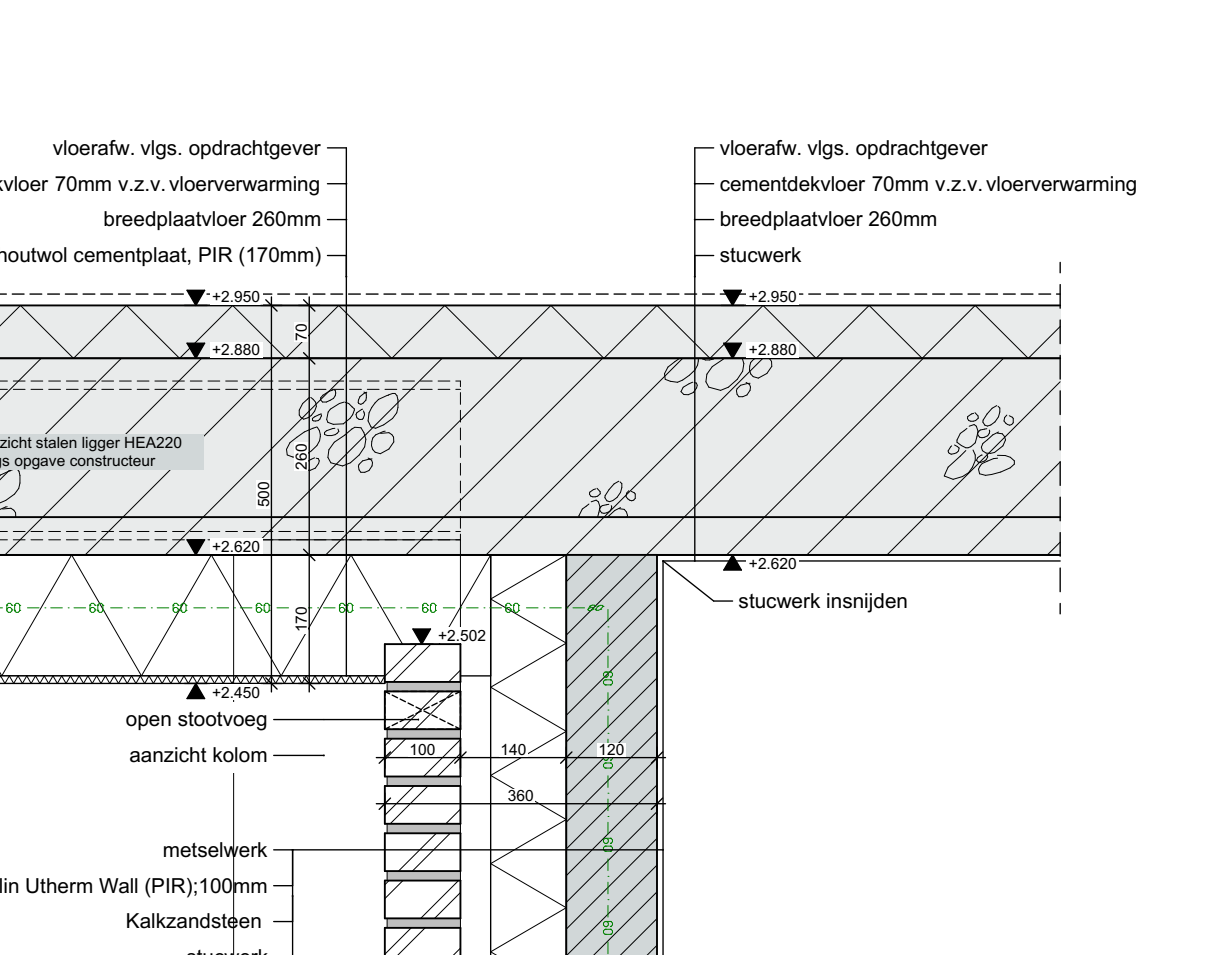
H-02



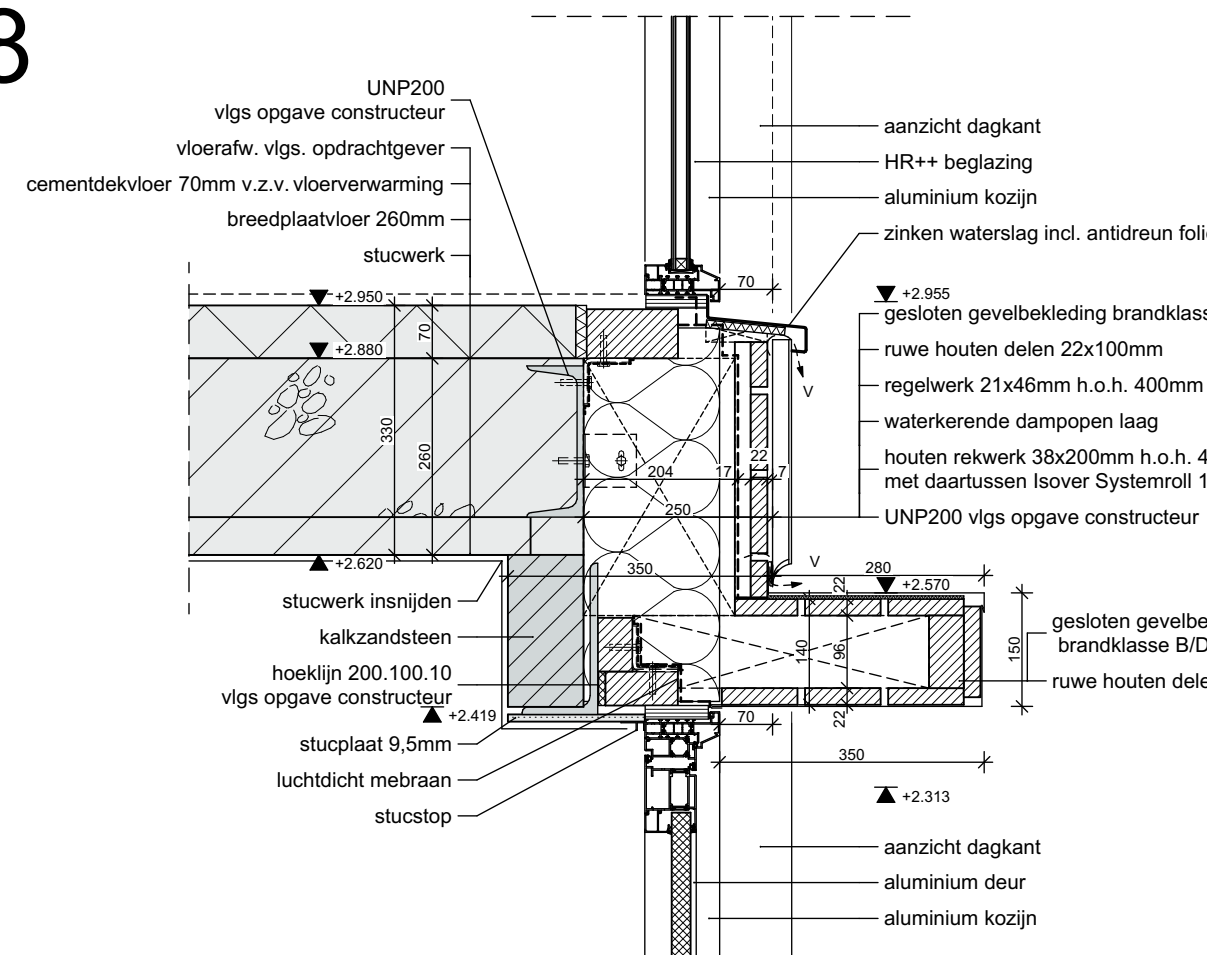
V-02



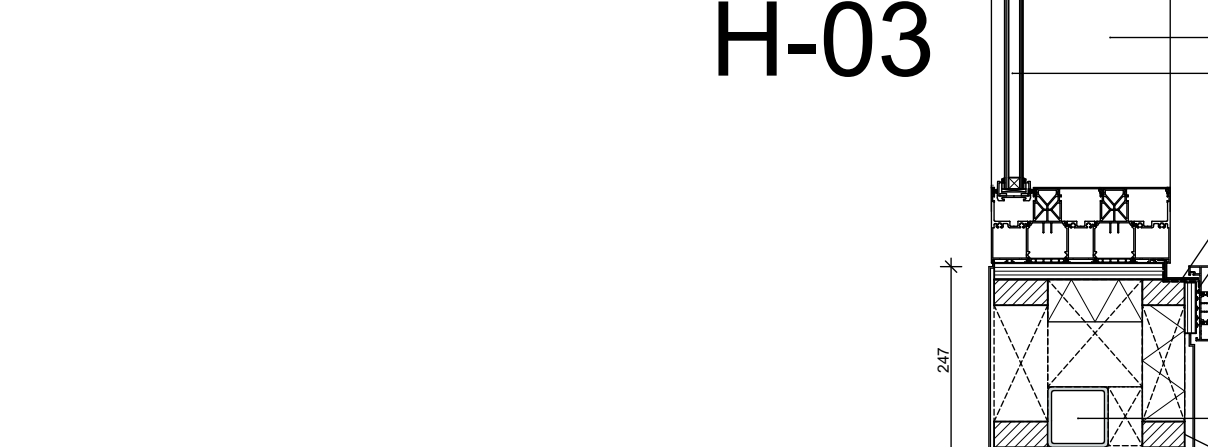
V-05



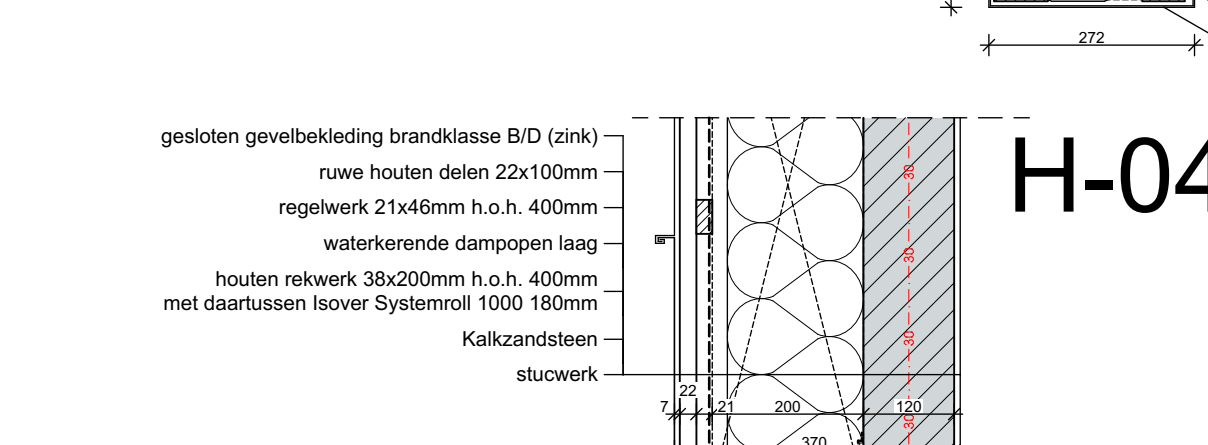
V-08



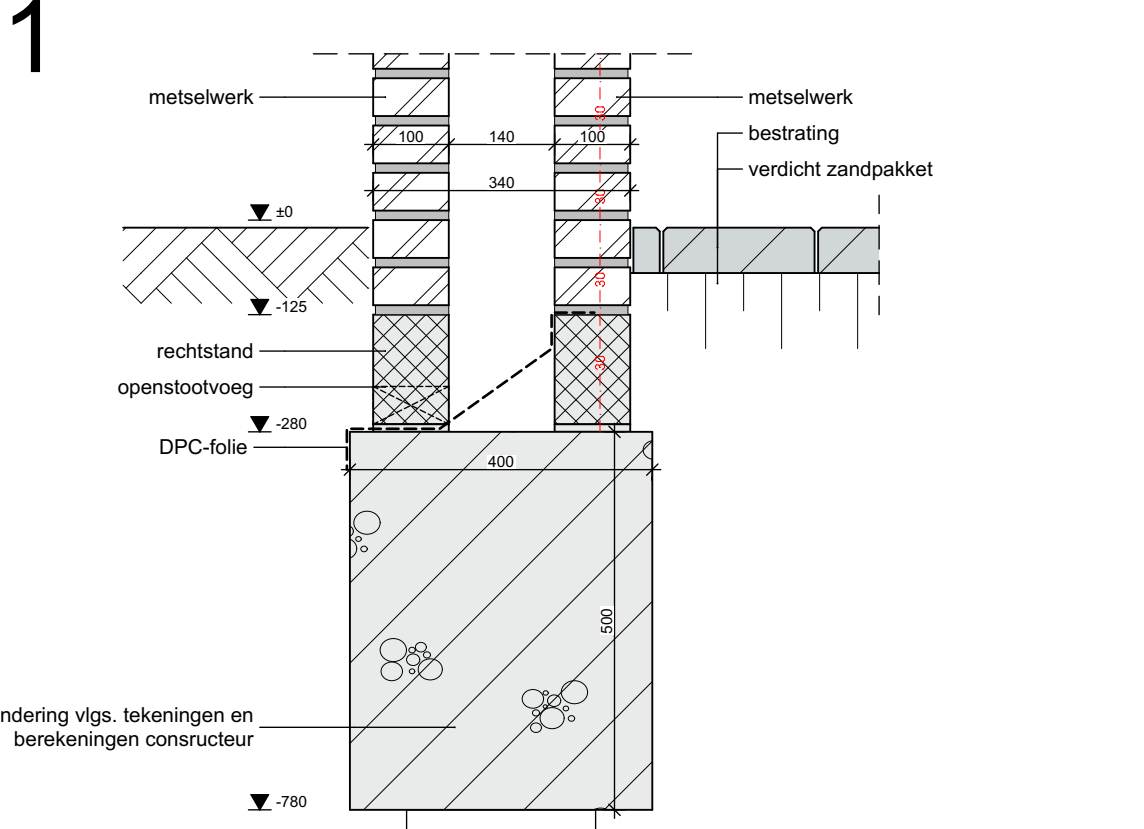
H-03



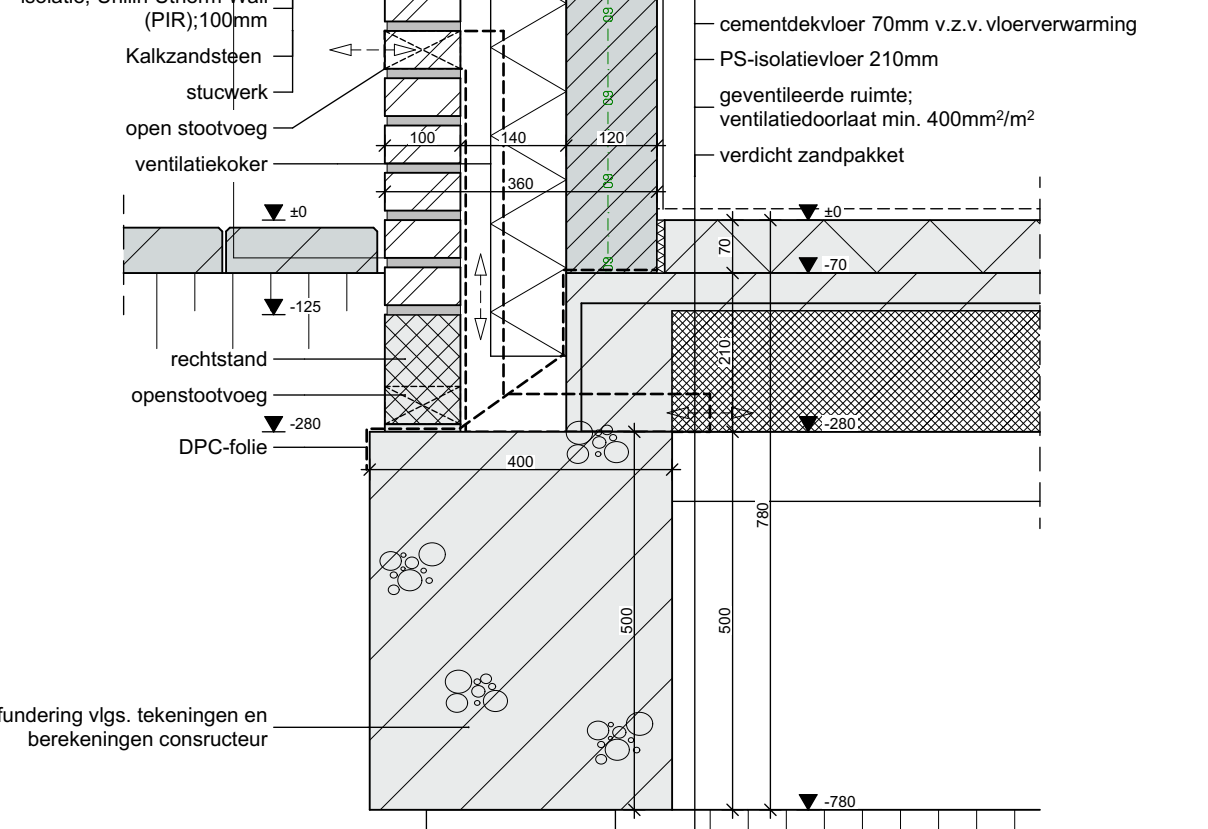
H-04



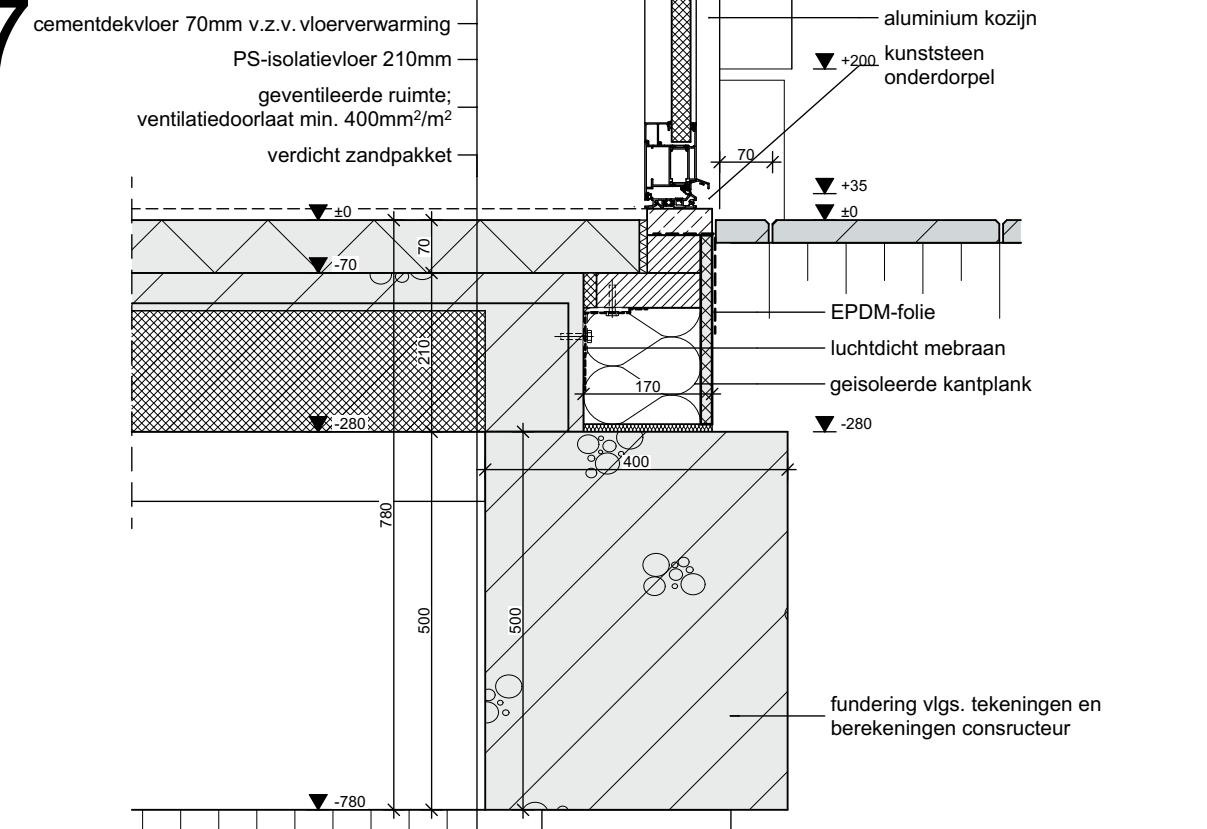
V-01



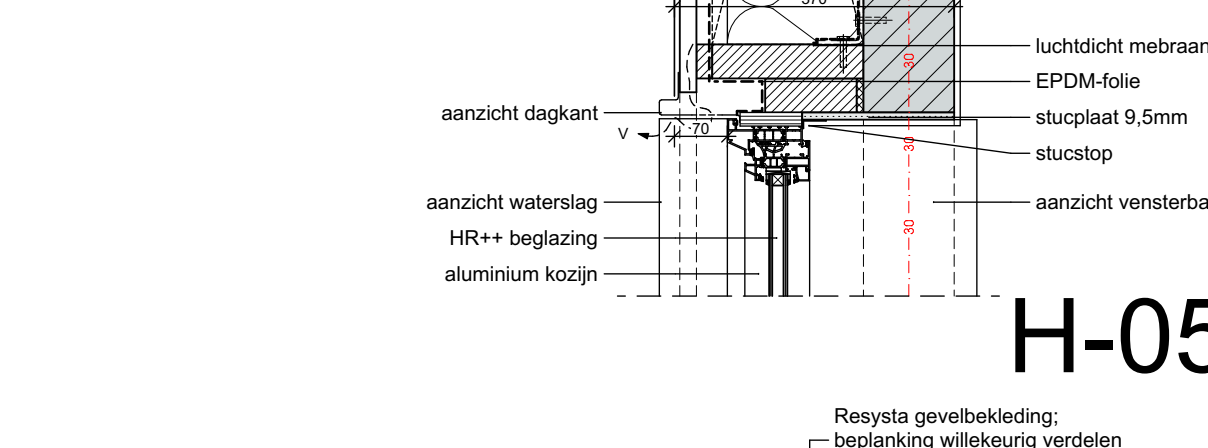
V-06



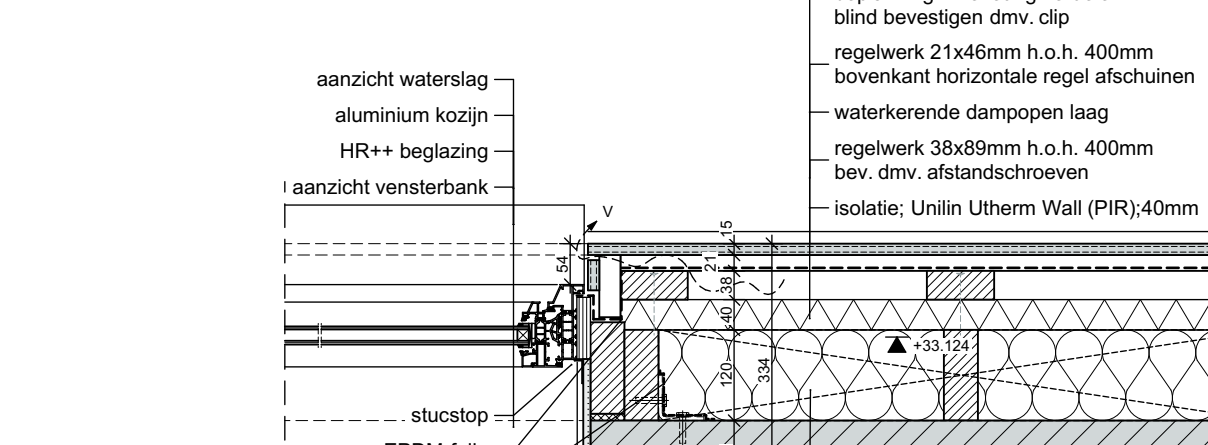
V-07



H-05



H-05



BOUWAANVRAAG

Project: Atterliewoning Voorvang te Etten-Leur
Onderdeel: Principe detaillering; detail V-01 t/m V-18 H-01 t/m H-05
Datum: 15 april 2024
Getekend: BS
Schaal: 1:10
Formaat: A1+

